

Broekema Products

Powerful technology, Durable solutions



EA Broekema BV
De Zwaikom 1
9641 KV Veendam
The Netherlands

Mail: info@broekema.nl
Tel: +31 598 696 464
Fax: +31 598 615 537
Website: www.broekema.nl

 **BROEKEMA**
Conveyor Belts

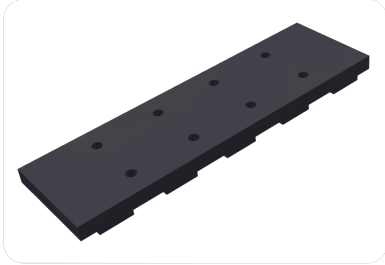
Broekema Products

Table of contents

Traction Belts	2 + 3
Rod Material	4
Rods (<i>Convexity / Cranking / Specials / Stickmark</i>)	5
Vulcanized Support Rods	6
Vulcanized PES Rods	7
Vulcanized CPP Rods	8
Twin Rods	9
Rubber Profiles / Full Surface	10
Joining Clips (+ Joining rod styles)	11 + 12
Endless Connection + Overlap Joints	13
Centre Belt Connections	14
Rubber HS Rollers	15
Steel HS Roller	16
Lightweight Rollers	17
Roller Parts / Bearings / Axles	18
Friction Drives Rollers	19
HS-type Sprockets	20 + 21
N-type Sprockets	22
NC-type Sprockets	23
RT-type Sprockets	24
KW-type Sprockets / Welded Sprockets (S/S)	25
PU Sprockets	26 + 27
Rubber Flights (RFL)	28
Steel Flights (BR)	29
Special Flights	30
Droplinks / Stone traps	31
Rod Covering	32
Pintle Rods	33 + 34 + 35
Fingers (Active Side Protection + Haulm fingers)	36
Quick Fix Solutions / Repair Sections	37
O.E.M. Drives	38 + 39
O.E.M. Rollers	40 + 41 + 42 + 43

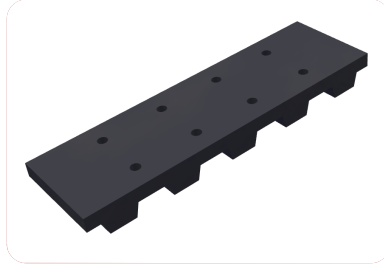
Traction Belts

Lower stretch, longer lifetime



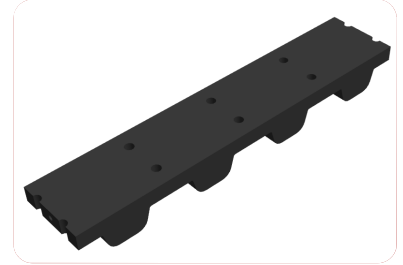
EN0300 (TN900 & TN1200)

- Friction Drive Rollers
- HS / RT / KW / Z / PU – sprockets
- 3 mm cams
- 8 mm (TN900) / 9 mm base (TN1200)



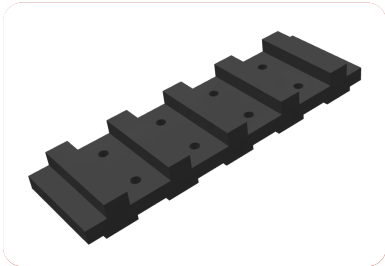
EN0900 (TN900 & TN1200)

- Friction Drive Rollers
- N / NC / KW / PU – sprockets
- 9 mm (drive-) cams
- 8 mm (TN900) / 9 mm base (TN1200)



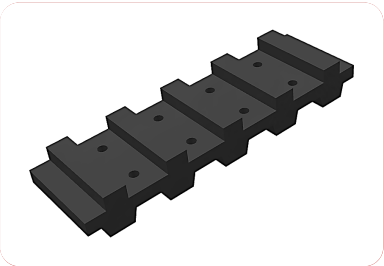
EN1200 Parabolic Cam (TN1200)

- Friction Drive Rollers
- N / NC / KW / PU – sprockets
- 12 mm (drive-) cams
- 10,5 mm base



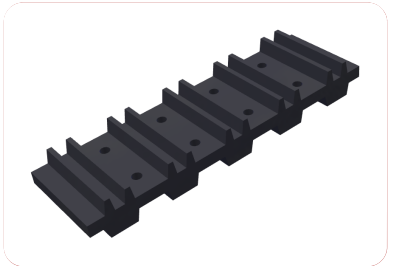
DN0309 (TN900 & TN1200)

- Friction Drive Rollers
- HS / RT / KW / Z / PU – sprockets
- 3 mm + 9 mm cams
- 8,5 mm (TN900) / 9 mm base (TN1200)



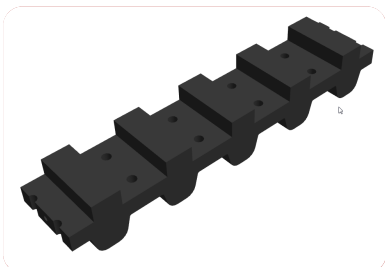
DN0909 (TN900 & TN1200)

- Friction Drive Rollers
- N / NC / KW / PU – sprockets
- 9 mm (drive-) cams + 9 mm cams
- 9 mm (TN900) / 9 mm base (TN1200)



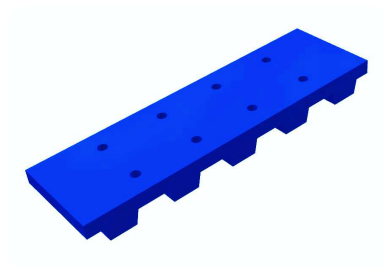
G0505 (TN900)

- Friction Drive Rollers
- N / NC / KW / PU – sprockets
- 8 mm (drive-) cams + 8 mm cams
- 8,5 mm base



DN1209 Parabolic Cam (TN1200)

- Friction Drive rollers
- N / NC / KW / PU – sprockets
- 12 mm (drive-) cams + 9 mm cams
- 10,5 mm base



Food Grade Belting

- Available on request

TN900: Load strain per 10mm traction belt width: 900 KGS
TN1000: Load strain per 10mm traction belt width: 1000KGS
TN1200: Load strain per 10mm traction belt width: 1200 KGS

Rod material

Material composition depending on application

MATERIAL	Hardened	Weldable	Available Diameters													
			5	6	7	8	9	10	11	12	13	14	15			
Spring Steel	No	No														
55Si7	Yes, 100% of the rod is heat treated	No														
54SiCr	Partly, only between forged area's	No														
Boron Steel	Yes, 100% of the rod is heat treated	Yes														
Fiber Glass	No	No														
Fiber Glass Coated	No	No														
Stainless Steel	No	Yes														

Spring Steel:

Class C (DIN 17228). This is our standard rod material.

55Si7:

Heavy Duty material. 100% hardened. The entire rod is heat treated, because we forge the rod first, and then we heat treat it. There is no weak spot in the complete rod.

54SiCr:

Rods are made of hardened material, but after the forging process (where the traction belts eventually will be) the rod loses its strength. 54SiCr6 steel is harder and tougher than spring steel class C. Furthermore it has all the properties of regular spring steel.

Boron Steel:

Weldable steel. Square mesh web material. After the rods have been made, the entire rod goes through the hardenings process.

Fiber Glass:

Lightweight material.

Fiber Glass Coated:

Lightweight material with a protection layer.

Stainless Steel:

Stainless Steel material is often used in wet / humid environments.

Rods

Convexity / Cranking / Special rods / Stickmark

CONVEXITY DOWN



Standard for all webs with 2 traction belts.

CONVEXITY UP



Standard for all webs with 3 or more traction-belts, and webs with WB-clips on the centre belt(s).

CENTRAL CONVEXITY



On request



UP CRANK (K)	2 BELTS	3+ BELTS	SPROCKET RUN (X)
5 mm	Green	Green	Min. 30 mm
10 mm	Green	Green	Min. 30 mm
15 mm	Green	Green	Min. 30 mm
20 mm	Green	Green	Min. 30 mm
25 mm	Green	Red	Min. 30 mm
30 mm	Green	Red	Min. 30 mm
35 mm	Green	Red	Min. 30 mm
40 mm	Green	Red	Min. 30 mm
45 mm	Green	Red	Min. 30 mm
50 mm	Green	Red	Min. 30 mm

Other Crank sizes on request



DOWN CRANK (K)	2 BELTS	3+ BELTS	SPROCKET RUN (X)
5 mm	Green	Green	Min. 30 mm
10 mm	Green	Green	Min. 30 mm
15 mm	Green	Green	Min. 30 mm
20 mm	Green	Green	Min. 30 mm
25 mm	Green	Red	Min. 30 mm
30 mm	Green	Red	Min. 30 mm
35 mm	Green	Red	Min. 30 mm
40 mm	Green	Red	Min. 30 mm
45 mm	Red	Red	Red
50 mm	Red	Red	Red

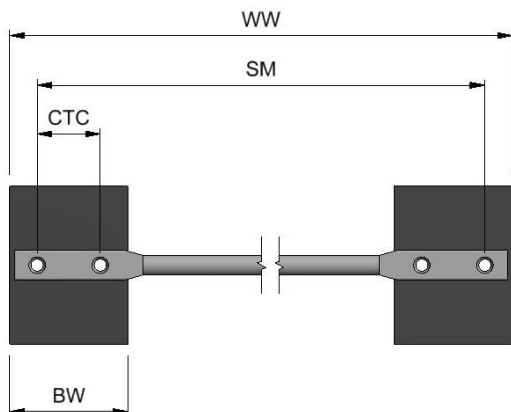
Other Crank sizes on request

CRANKED UP RODS

CRANKED DOWN RODS

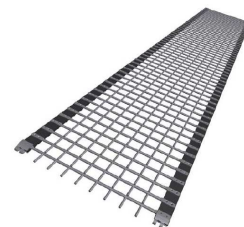
ROD MEASUREMENTS

- SM = Stickmark
- CTC = Centre to centre rivet holes
- WW = Web width
- BW = Belt width



SQUARE MESH RODS / RODS WITH PINS

- On request > Production after approved drawing



REMARK: CRANKED TWIN RODS

- Only CRANKED DOWN: 5 | 6 | 7 | 8 | 9 | 10 mm
- No Sprocket Runs
- Not possible in combination with: Fiber Glass / Coated

Vulcanized Support Rods

Less noise, less wear = Longer life time



SUPPORT ROD	WEB WIDTH	BELT WIDTH	C.T.C. RIVET HOLES	VULCANIZED SURFACE	DIAMETER
117000715	800	75	30	610 mm	19
117001128	800	75	32	610 mm	19
117000716	800	60	30	635 mm	19
117001133	800	60	32	635 mm	19
117000717	820	60	30	660 mm	19
117000833	850	75	32	660 mm	19
117000718	900	75	30	710 mm	19
117001129	900	75	32	710 mm	19
117000719	900	60	30	735 mm	19
117001129	900	60	32	735 mm	19
117000720	1000	75	30	810 mm	19
117001130	1000	75	32	810 mm	19
117001419	1000	60	30	835 mm	19
117000743	1000	60	32	835 mm	19
117001353	1200	60	32	1035 mm	19
ON REQUEST	OTHER LENGTHS ON REQUEST				

Vulcanized PES Rods

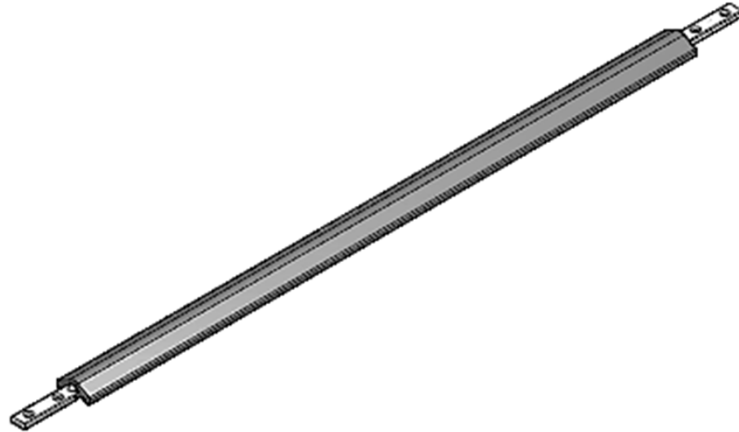
Ideal for conveying long crops, like carrots.



PES-ROD	WEB WIDTH	BELT WIDTH	CTC RUBBER PINTLES	HEIGHT OF RUBBER PINTLE	AVAILABLE	ACTIVE SIDE FINGER
117000085	630	60	50	128	ON REQUEST	NO
117000627	630	60	50	128 (Reinforced)	ON REQUEST	NO
117000087	900	60	100 (8x)	128	ON REQUEST	NO
117000088	900	60	100 (7x)	128	ON REQUEST	NO
117000089	1000	60	50	128	ON REQUEST	NO
117000091	1000	60	100	128	ON REQUEST	NO
117001138 *	1000	60	100	128	ON REQUEST	NO
117001232 *	1000	60	100	128	STOCK	YES
117000094	1100	60	100	128	ON REQUEST	NO
117001233 *	1100	60	100	128	STOCK	YES
117001231 *	1195	60	100	128	STOCK	YES
117001461*	1195	60	50	128	STOCK	YES
*	100% Heat treated rod inside					

Vulcanized CPP-Rods

Ideal for quick dewatering + crop protection



CPP-RODS (RUBBER)	WEB WIDTH	BELT WIDTH	VULCANIZED SURFACE
117001109	443	60	314
117001073	593	60	464
117001074	608	60	479
117000808	783	60	654
117000815	793	60	664
117000838	843	60	714
117000809	893	60	764
117001152	983	60	854
117000972	993	60	864
ON REQUEST	OTHER LENGTHS ON REQUEST		

PLEASE NOTICE:

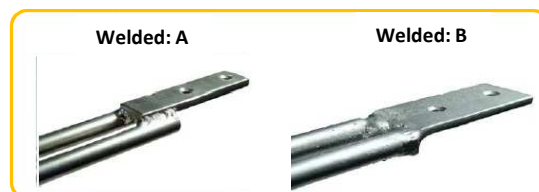
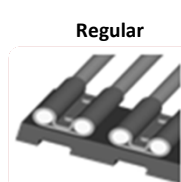
- Class C (Spring steel) rods are used for our standard CPP-rods.
- Stronger steel on request.
- Stainless Steel rods on request.
- Food Grade Rubber on request (Blue color).
- The Vulcanization mold is Modular, we can make CPP-rods in the following web widths (MM):

	408	508	608	708	808	908	1008	1108
	418	518	618	718	818	918	1018	1118
333	433	533	633	733	833	933	1033	1133
343	443	543	643	743	843	943	1043	1143
358	458	558	658	758	858	958	1058	1158
368	468	568	668	768	868	968	1068	1168
383	483	583	683	783	883	983	1083	1183
393	493	593	693	793	893	993	1093	1193

Twin Rods

Reducing the gap

ROD DIAMETER + MATERIAL		AVAILABLE PITCH (+ GAP)									
		28/14	32/16	35/17	36/18	40/20	42/21	44/22	45/22	50/25	56/28
Ø 5	Stainless Steel		(11)			(15)	(16)			(20)	(23)
	Class C / B	(9)	(11)	(12)	(13)	(15)	(16)			(20)	
Ø 6	Stainless Steel	(8)	(10)	(11)	(12)	(14)		(16)	(16)		
	Fiber Glass	(8)	(10)	(11)	(12)	(14)	(15)	(16)	(16)	(19)	
	Fiber Glass Coated	(8)	(10)	(11)	(12)	(14)	(15)	(16)	(16)	(19)	
	Class C / B	(8)	(10)	(11)	(12)	(14)	(15)	(16)	(16)	(19)	
Ø 7	Stainless Steel	(7)	(9)		(11)	(13)	(14)			(18)	
	Class C	(7)	(9)	(10)	(11)	(13)	(14)	(15)	(15)	(18)	(21)
Ø 8	Stainless Steel	(6)		(9)	(10)	(12)	(13)	(14)		(17)	(20)
	Fiber Glass	(6)	(8)	(9)	(10)	(12)	(13)	(14)	(14)	(17)	(20)
	Class C	(6)	(8)	(9)	(10)	(12)	(13)	(14)	(14)	(17)	(20)
Ø 9	Stainless Steel		(7)			(11)				(16)	(19)
	Class C			(8)	(9)	(11)				(16)	(19)
Ø 10	Stainless Steel		(6)	(7)	(8)	(10)		(12)	(12)	(15)	(18)
	Fiber Glass		(6)	(7)	(8)	(10)		(12)	(12)	(15)	(18)
	Fiber Glass Coated		(6)	(7)	(8)	(10)		(12)	(12)	(15)	(18)
	Class C		(6)	(7)	(8)	(10)		(12)	(12)	(15)	(18)
	WELDED TWIN ROD BORON (A or B)		(6)	(7)	(8)	(9)	(10)	(12)	(12)	(15)	



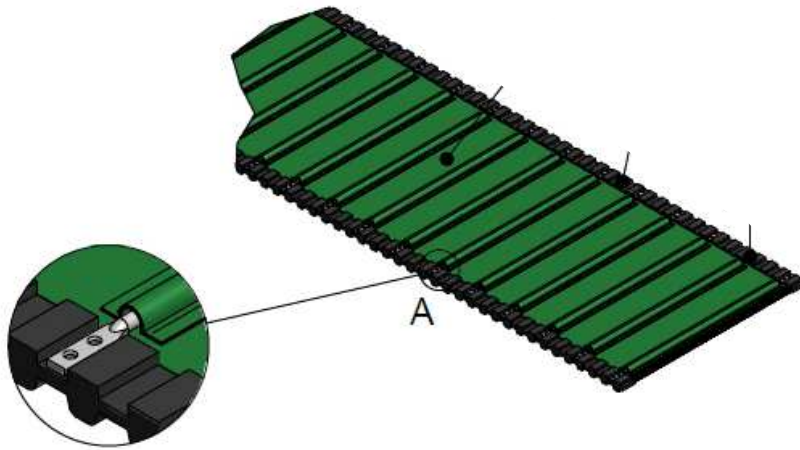
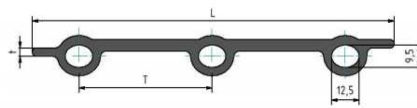
 AVAILABLE / STOCK

Full Surface Belting

Rubber / PVC / PU Solutions



RUBBER PROFILE	PITCH	LENGTH OF 1 SECTION	ROD DIAMETER	THICKNESS
T30/60	60	163	8 / 9 / 10	3,8 mm
T40/80	80	216	8 / 9 / 10	3,8 mm
T50/100	100	271	8 / 9 / 10	3,8 mm



FULL SURFACE BELTING:

Custom Made Solutions
Different material options:

- Canvas
- PU
- PVC

With or without Flights

Endless / Joining section

2 or more traction belts

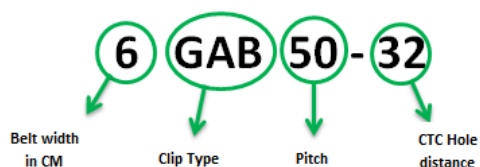
With or without Active Side Protection

Joining Clips

Easy dismounting of webs



JOINING CLIP TYPE									
PITCH	AB	AF*	G	GAB	BS	BC	BSV (Pintle)	GBS	CC
28	4 AB 28-20	5 AF 28-20	4 G 28-20	6 GAB 28-20	6 BS 28-32				6 CC 28-32
	4 AB 28-24	5 AF 28-24	5 G 28-20	6 GAB 28-30					
		6 AF 28-30	6 G 28-32	6 GAB 28-32					
32	4 AB 32-20	5 AF 32-20	5 G 32-20	5 GAB 32-20	5 BS 32-20				6 CC 32-32
		6 AF 32-32	6 G 32-30	6 GAB 32-32	6 BS 32-32				
			6 G 32-32						
35			6 G 35-30		6 BS 35-32	6 BC 35-20	6 BSV 35-30	7,5 GBS 35-20	
			6 G 35-32		6 BS 35-30	6 BC 35-30	6 BSV 35-32	7,5 GBS 35-32	
						6 BC 35-32			
36	4 AB 36-20	5 AF 36-20	5 G 36-20	6 GAB 36-20					6 CC 36-32
	6 AB 36-20	6 AF 36-30	6 G 36-30	6 GAB 36-30					
		6 AF 36-32	6 G 36-32	6 GAB 36-32		6 BC 40-30			
40		5 AF 40-20	4 G 40-20	6 GAB 40-20	6 BS 40-32	6 BC 40-32	6 BSV 40-30	7,5 GBS 40-32	
		5 AF 40-24	6 G 40-20	6 GAB 40-30			6 BSV 40-32	7,5 GBS 40-20	
		6 AF 40-30	6 G 40-30	6 GAB 40-32					
		6 AF 40-32	6 G 40-32						
42	5 AB 42-24	5 AF 42-20	6 G 42-20	6 GAB 42-32	6 BS 42-32				6 CC 42-32
		6 AF 42-32	6 G 42-32						
43								7,5 GBS 43-20	
								7,5 GBS 43-32	
44				6 GAB 44-20		6 BC 44-32			
				6 GAB 44-30					
				6 GAB 44-32					
45		5 AF 45-20	6 G 45-30	6 GAB 45-32	6 BS 45-32				6 CC 45-32
		6 AF 45-32	6 G 45-32						
50	4 AB 50-20	5 AF 50-20	6 G 50-30	6 GAB 50-20	6 BS 50-32	6 BC 50-32		7,5 GBS 50-20	6 CC 50-32
		6 AF 50-32	6 G 50-32	6 GAB 50-30				7,5 GBS 50-32	
				6 GAB 50-32					
56		5 AF 56-32							



*AF-clips also available in Stainless Steel:

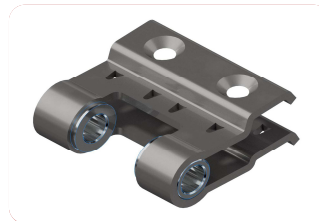
6AAF 28-32 / 6AAF 32-32 / 6AF 36-32 / 6AF 40-32
6AF 42-32 / 6AF 45-32 / 6AF 50-32

Joining Clips

For every application a proper clip



AF-series (Stainless Steel version available)
AF-clips pitch 28 and 32 have 2 rivet holes. Larger pitches with 4 rivet holes.



BS-series.
Clips with replaceable bushings.
2 Options available:
Riveted or Screwed On.



G-series.
G-clips pitch 28 and 32 have 2 rivet holes. Larger pitches with 4 rivet holes.



GBS-series.
Joining Rod can be secured. Male + Female or Double Pivot available.



BC-series.
BC-clips are designed for High Profile traction belts, therefore only available in pitches 35, 40, 44 & 50.



Heavy Duty Clip (HDC).
Available in every pitch. 2 or 4 holes
Completely hardened
1 or 2 loose bottom plates
Screwed-on



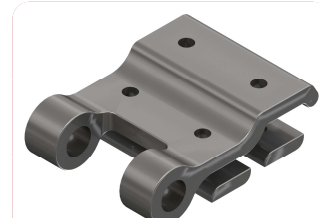
AB-series.
AB-clips pitch 28 and 32 have 2 rivet holes. Larger pitches with 4 rivet holes.
Not available in CTC32



GAB (L)-series.
GAB clips have 2 rivet holes.
GAB L clips (loose bottom plate) have 4 rivet holes.



BSV-series.
Clips with replaceable bushings. Designed for Pintle webs. Joining Rod no longer required.



CC-series.
CC clips are made off Cast Steel, which allows us to weld on. Connected with 2, traction belt friendly, loose bottom plates.



Joining Rod style for:
G / BC / AB / HDC /
GAB (L) / CC-Clips



Joining Rod style for:
AF / GBS-Clips



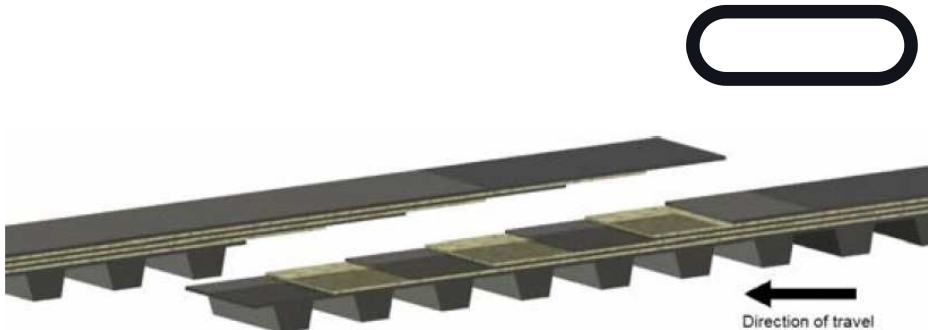
Joining Rod style for:
BS-Clips



Joining Bolt for:
BSV-Clips (Pintle belts)

Endless / Overlap joints

Heavy Duty Applications



Endless Joint Connections:

- An endless vulcanized joint has the highest tensile strength of all joint.
- Offers 70% of the traction belting's tensile strength.
- Uninterrupted belt profile, especially suitable for high profile cam drive.
- Always preferred if the machine design makes this a practical option. One side of the machine must be detachable for belt replacement purposes, or the frame's central cross member must be detachable.
- Subject to the belt pitch, the belt ends are overlapped over 5-8 pitches, in 2 or 3 layers.
- A decal with arrow indicates the direction of travel.
- Minimum end roller diameter 110mm is recommended.
- 1200 mm is the shortest possible length.



Lap Joint Connections:

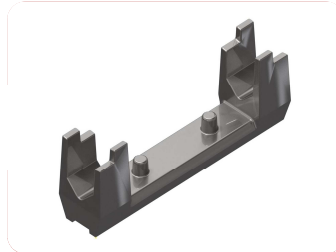
- Recommended for heavy duty applications where endless vulcanized connections are impractical.
- Offers 50% of the traction belting's tensile strength.
- Uninterrupted belt profile, especially helpful for high profile cam drive.
- The belt ends are stepped in either 2 or 3 layers.
- Minimum end roller diameter 110mm is recommended.
- Rods are supplied loose with the conveyer, together with a lap joint set (screws and threaded plates)
- Most used lap joint: 2-2-2
- Most used lap joint in heavy applications, such as Sugar Beet: 3-3

Centre Belt Connections

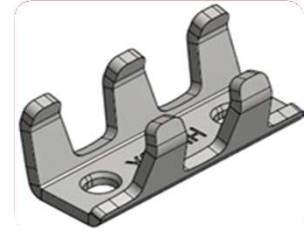
Connecting methods for centre belt



NOS
No extra material in flat areas. NOS rods are most used under joining clips.



KS clip
For diameters:
9 | 10 | 11 | 12



H-Pintle Clamp
For H-Pintle webs with 3 or more centre belts.



Highflex
Extra material added in flat areas, in vertical direction, making the area higher and stronger.



WB clip

Belts 50 mm	CTC 20	Rod 10 mm
Belts 50 mm	CTC 20	Rod 8 mm
Belts 60-75mm	CTC 32	Rod 10 mm
Belts 60-75 mm	CTC 30	Rod 11 mm
Belts 60-75 mm	CTC 30	Rod 11 mm
Belts 60-75 mm	CTC 32	Rod 11 mm
Belts 60-75 mm	CTC 32	Rod 12 mm



4-lips Clamp
For webs with 12x6 strips / rods with 3 or more centre belts.

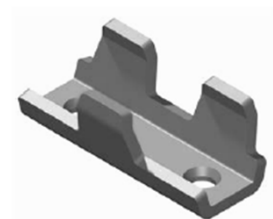


Superflex
Extra material added in flat areas, in horizontal direction, making the area wider and stronger.



P clip

Belts 20 mm	1 Hole	Rod 8 mm
Belts 20 mm	1 Hole	Rod 10 mm
Belts 20 mm	1 Hole	Rod 11 mm
Belts 20 mm	1 Hole	Rod 12 mm
Belts 30 mm	1 Hole	Rod 11 mm



3-lips Clamp
For V-Pintle webs with 3 or more centre belts.

Rubber HS Rollers

Ø 80 - Ø 210



HS 8 R
Size: 80 x 57
Flange: 118
Open Bore M16



HS 8 RZ
Size: 80 x 62
Open Bore M16



HS 9 R
Size: 90 x 62
Flange: 130
Open Bore M16



HS 9 RZ
Size: 90 x 62
Open Bore M16



HS 9 RS
Size: 90 x 44
Flange: 130
Open Bore M16



HS 9 R CONC.FL.
Size: 90 x 62
Flange: 130
Open Bore M16



HS 9 H
Size: 90 x 67
Flange: 200
Open Bore M16



HS 10 R
Size: 100 x 67
Flange: 140
Open Bore M16 / M20



HS 10 RZ
Size: 100 x 67
Open Bore M16 / M20



HS 11 R
Size: 110 x 62
Flange: 148
Open Bore M16 / M20



HS 11 RZ
Size: 110 x 62
Open Bore M16 / M20



HS 11 RS
Size: 110 x 47
Flange: 148
Open Bore M16 / M20



HS 14 R
Size: 140 x 67
Flange: 180
Open Bore M16 / M20



HS 14 RZ
Size: 140 x 67
Open Bore M16 / M20



HS 18 R
Size: 180 x 67
Flange: 248
Open Bore M16



HS 18 RZ
Size: 180 x 67
Open Bore M16



HS 21 R
Size: 210 x 67
Flange: 240
Open Bore M20

Steel HS Rollers

Ø 60 - Ø 180



HS 6
Size: 60 x 53
Flange: 100
Open Bore M16



HS 6 Z
Size: 62 x 62
Open Bore M16



HS 6 SZ
Size: 62 x 42
Open Bore M16



HS 8
Size: 80 x 62
Flange: 120
Open Bore M16 / M20



HS 8 CONC.FL
Size: 90 x 62
Flange: 120
Open Bore M16 / M20



HS 8 Z
Size: 80 x 62
Open Bore M16 / M20



HS 9 OPTIONAL
Size: 90 x 75
Flange: 130
Open Bore M16



HS 9 WBR
Size: 90 x 90
Flange: 130
Open Bore M16 / M20



HS 10
Size: 100 x 75
Flange: 135
Open Bore M16 / M20



HS 10 Z
Size: 100 x 75
Open Bore M16 / M20



HS 10 H
Size: 100 x 62
Flange: 180
Open Bore M16 / M20



HS 10 WBR
Size: 100 x 62
Flange: 150
Open Bore M16



HS 11
Size: 110 x 67
Flange: 150
Open Bore M16 / M20



HS 11 Z
Size: 110 x 67
Open Bore M16 / M20



HS 15
Size: 150 x 67
Flange: 250
Open Bore M16



HS 15 Z
Size: 150 x 67
Open Bore M16



HS 18
Size: 180 x 62
Flange: 220
Open Bore M16 / M20



HS 18 Z
Size: 180 x 62
Open Bore M16 / M20

Lightweight Rollers

Ø 75 - Ø 95



121000843
Size: 95 x 60
Open Bore M16



121001441
Size: 95 x 55
Flange: 130 (Steel)
Open Bore M16



121000844
Size: 75 x 62
Open Bore M16



121000853
Size: 75 x 50
Open Bore M16



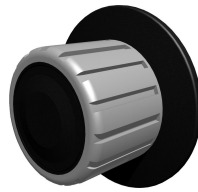
121001244
Size: 75 x 55
Flange: 105 (Steel)
Open Bore M16



121001227
Size: 100 x 27
Open Bore M16



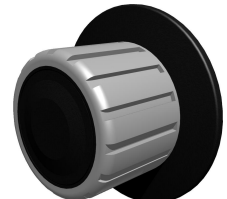
121001228
Size: 123 x 27
Open Bore M16



NPK 75 NF
Size: 75 x 61
Flange: 115 (Nylon)
Open Bore M16



NPK 75 Z
Size: 75 x 61
Open Bore M16



NPK 90 NF
Size: 90 x 61
Flange: 130 (Nylon)
Open Bore M16



NPK 90 Z
Size: 90 x 61
Open Bore M16



**252106
NP 95 Z YELLOW**
Size: 95 x 60
Open Bore M16



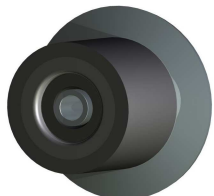
**1131029638
NP 95 Z BLACK**
Size: 95 x 60
Open Bore M16

PICTURE STILL TO
COME

**LONG LIFE
ROLLER Z**
Size: 92,5 x 68
Open Bore M16 / M20

PICTURE STILL TO
COME

**LONG LIFE
ROLLER**
Size: 92,5 x 68
Flange: 130
Open Bore M16



NP 90 SF
Size: 90 x 61
Flange: 130
Open Bore M16

Roller Parts

Customize your HS-rollers



OPEN BORES

M16
M20

UNUSUAL SIZES
ON REQUEST



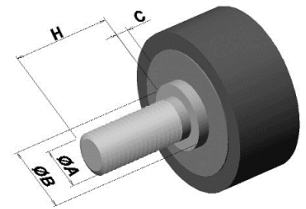
THREADED AXLES

STOCK ITEMS: >

OPTIONS:

- Flat Sides
- Grease Nipple
- Other sizes on request

M16 X 30
M16 X 40
M16 X 50
M16 X 60
M16 X 80
M20 X 30
M20 X 40
M20 X 50
M20 X 60
M20 X 80



AXLE MEASUREMENTS

A = Thread (M10/M12 etc.)
B = Shoulder Diameter
C = Shoulder Length
H = Axle Length



BEARINGS

6005-Z
6005-2RST ECODRIVE
6205-2RST ECODRIVE
6206-2RST ECODRIVE
S6005-2RST HYBRID ECODR.
INOX / CERAMIC Waterproof

6206-2RS COM
6005-2RS COM S/S
6005-2RS COM SKF
6206-2RS COM SKF
6308-2RS1 COM SKF

O.D. I.D.

REMARKS

47	25	1 Seal
47	25	2 x Triple Seal
52	25	2 x Triple Seal
62	30	2 x Triple Seal
47	25	2 x Triple Seal
62	30	2 Seals
47	25	2 Seals
47	25	1 Seal
62	30	2 Seals
90	40	2 Seals



FELT RINGS

O.D.: 44 / I.D.: 24 / W.: 7,5
O.D.: 44 / I.D.: 24 / W.: 4,5
O.D.: 44 / I.D.: 30 / W.: 7,5
O.D.: 58 / I.D.: 30 / W.: 6,0

O.D. = Outside Diameter
I.D. = Inside Diameter
W. = Width



DUST CAPS

Metal Dust cap: O.D. = 47
Metal Dust cap: O.D. = 62
Rubber Dust cap: O.D. = 47
Plastic Dust Cap for NP-Rollers

Metal Dust ring: O.D. = 47 / I.D. = 25
Metal Dust ring: O.D. = 62 / I.D. = 30
Rubber Dust ring: O.D. = 47 / I.D. = 25



METAL CONVEX RING METAL CONVEX CAP

Outside Diameter 47
Inside Diameter 25 (ring)

Friction Drive Rollers

Ø 110 – Ø 180



HS 11 R
Size: 110 x 62
Flange: 148
Bore: 30-50



HS 11 RZ
Size: 110 x 62
Bore: 30-50



HS 14 R
Size: 140 x 67
Flange: 180
Bore: 30-50



HS 14 RZ
Size: 140 x 67
Bore: 30-50



HS 18 R
Size: 180 x 67
Flange: 248
Bore: 30-50



HS 18 RZ
Size: 180 x 67
Bore: 30-50



HS 21 R
Size: 210 x 75
Flange: 240
Bore: 30-50



HS 21 RZ
Size: 210 x 75
Bore: 30-50



HS 24 R
Size: 240 x 70
Flange: 300
Bore: 30-50



HS 24 RZ
Size: 240 x 65
Bore: 30-50



HS 41 R
Size: 410 x 90
Flange: 448
Bore: 30-50



FRD 14 R
Size: 140 x 65
Flange: 180
Bore: 30-50
SPLITTABLE



FRD 14 RZ
Size: 140 x 65
Bore: 30-50
SPLITTABLE



FRD 18 R
Size: 180 x 60
Flange: 220
Bore: 30-50
SPLITTABLE



FRD 18 RZ
Size: 180 x 68
Bore: 30-50
SPLITTABLE



FRD 20 R
Size: 200 x 80
Flange: 260
Bore: 30-50
SPLITTABLE

HS-Type Sprockets

Rod drive + belt support



HS 28-14

PITCH: 28
Flange: 146
Cage: 108
Weight: 2,7
Bore: 25-40



HS 28-16

PITCH: 28
Flange: 165
Cage: 124
Weight: 3,0
Bore: 25-40



HS 28-22

PITCH: 28
Flange: 220
Cage: 180
Weight: 5,2
Bore: 25-40



HS 28-22 3TB

PITCH: 28
Flange: 220
Cage: 180
Weight: 5,2
Bore: 25-40



HS 32-12

PITCH: 32
Flange: 145
Cage: 105
Weight: 3,9
Bore: 25-40



HS 32-18

PITCH: 32
Flange: 202
Cage: 162
Weight: 3,9
Bore: 25-60



HS 36-10

PITCH: 36
Flange: 135
Cage: 100
Weight: 3,2
Bore: 25-40



HS 36-12

PITCH: 36
Flange: 168
Cage: 118
Weight: 3,3
Bore: 25-40



HS 36-14

PITCH: 36
Flange: 190
Cage: 140
Weight: 4,0
Bore: 25-60



HS 36-16

PITCH: 36
Flange: 210
Cage: 166
Weight: 6,8
Bore: 25-40



HS 36-16 3TB

PITCH: 36
Flange: 213
Cage: 162
Weight: 7,5
Bore: 35-60



HS 36-18

PITCH: 36
Flange: 235
Cage: 187
Weight: 6,0
Bore: 25-60



HS 36-18 3TB

PITCH: 36
Flange: 246
Cage: 189
Weight: 8,4
Bore: 35-60



HS 40-10

PITCH: 40
Flange: 160
Cage: 110
Weight: 3,7
Bore: 25-40



HS 40-14

PITCH: 40
Flange: 220
Cage: 167
Weight: 7,6
Bore: 35-60

HS-Type Sprockets

Rod drive + belt support



HS 42-10

PITCH: 42
Flange: 163
Cage: 113
Weight: 3,0
Bore: 25-40



HS 42-12

PITCH: 42
Flange: 190
Cage: 140
Weight: 4,6
Bore: 25-60



HS 42-14

PITCH: 42
Flange: 218
Cage: 173
Weight: 5,0
Bore: 25-60



HS 42-14 3TB

PITCH: 42
Flange: 226
Cage: 169
Weight: 7,4
Bore: 25-60



HS 42-16 3TB

PITCH: 42
Flange: 252
Cage: 194
Weight: 8,5
Bore: 25-60



HS 45-9

PITCH: 45
Flange: 160
Cage: 110
Weight: 3,6
Bore: 25-40



HS 45-12

PITCH: 45
Flange: 200
Cage: 153
Weight: 4,8
Bore: 25-60



HS 45-14

PITCH: 45
Flange: 230
Cage: 180
Weight: 7,8
Bore: 25-60



HS 45-14 3TB

PITCH: 45
Flange: 237
Cage: 182
Weight: 8,0
Bore: 35-60



HS 50-8

PITCH: 50
Flange: 150
Cage: 109
Weight: 4,2
Bore: 25-40



HS 50-10

PITCH: 50
Flange: 195
Cage: 142
Weight: 5,4
Bore: 25-40



HS 50-12

PITCH: 50
Flange: 220
Cage: 173
Weight: 7,0
Bore: 35-60



HS 50-14 3TB

PITCH: 50
Flange: 273
Cage: 208
Weight: 11,0
Bore: 35-60

N-Type Sprockets

Cam drive



N 28-24-12 ST

PITCH: 28
 Flange: 243
 Cage: 200
 Weight: 6,6
 Bore: 30-60



N 35-17

PITCH: 35
 Flange: 215
 Cage: 175
 Weight: 6,9
 bore: 30-50



N 35-27

PITCH: 35
 Flange: 326
 Cage: 288
 Weight: 13,6
 Bore: 30-50



N 40-10

PITCH: 40
 Flange: 150
 Cage: 115
 Weight: 2,0
 Bore: 25-35



N 40-14

PITCH: 40
 Flange: 215
 Cage: 166
 Weight: 5,4
 Bore: 25-40



N 40-15

PITCH: 40
 Flange: 223
 Cage: 175
 Weight: 6,9
 Bore: 25-40



N 40-16 (8 finger)

PITCH: 40
 Flange: 225
 Cage: 194
 Weight: 6,9
 Bore: 25-40



N 40-18 (9 finger)

PITCH: 40
 Flange: 252
 Cage: 217
 Weight: 7,5
 Bore: 25-40



N 50-12

PITCH: 50
 Flange: 220
 Cage: 176
 Weight: 5,8
 Bore: 25-50



N 50-12 STH

PITCH: 50
 Flange: 219
 Cage: 178
 Weight: 6,8
 Bore: 25-50



N 50-14

PITCH: 50
 Flange: 258
 Cage: 210
 Weight: 7,5
 Bore: 25-50



N 50-14 STH

PITCH: 50
 Flange: 243
 Cage: 209
 Weight: 8,0
 Bore: 25-50

NC-Type Sprockets

Cam drive + Rod drive



NC 35-20

PITCH: 35
Flange: 252
Cage: 210
Weight: 7,7
Bore: 35-60



NC 40-18 3TB

PITCH: 40
Flange: 265
Cage: 217
Weight: 10,8
Bore: 35-60



NC 40-18 3TBV

PITCH: 40
Flange: 265
Cage: 217
Weight: 10,8
Bore: 35-60



NC 44-16

PITCH: 44
Flange: 265
Cage: 207
Weight: 8,6
Bore: 35-60



NC 50-12

PITCH: 50
Flange: 243
Cage: 178
Weight: 11,0
Bore: 35-60



NC 50-14

PITCH: 50
Flange: 260
Cage: 210
Weight: 9,0
Bore: 35-60



NC 50-14 V

PITCH: 50
Flange: 260
Cage: 210
Weight: 13,2
Bore: 35-60



NC 50-16 V

PITCH: 50
Flange: 300
Cage: 240
Weight: 14,9
Bore: 35-60

RT-Type Sprockets

Rod drive + Full belt support



RT 33-12

PITCH: 33
Flange: 164
Cage: 110
Weight: 3,9
Bore: 25-40



RT 42-12

PITCH: 42
Flange: 192
Cage: 144
Weight: 7,0
Bore: 35-60



RT 45-14

PITCH: 45
Flange: 254
Cage: 184
Weight: 8,2
Bore: 35-60



RT 56-10

PITCH: 56
Flange: 230
Cage: 165
Weight: 9,2
Bore: 35-60



RT 50-10

PITCH: 50
Flange: 205
Cage: 144
Weight: 7,0
Bore: 35-60

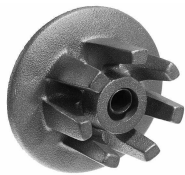


RT 50-14

PITCH: 50
Flange: 264
Cage: 204
Weight: 11,0
Bore: 35-60

KW-Type Sprockets

Friction Drive



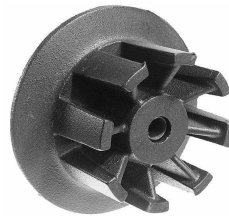
KW 80

Size: 80
Flange: 125
Weight: 1,3 KGS
Bore: 25-40
NOT splittable



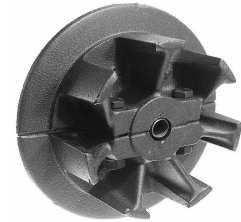
KW 100

Size : 100
Flange: 150
Weight: 2,6 KGS
Bore: 25-40
NOT splittable



KW 115

Size : 115
Flange: 165
Weight: 3,5 KGS
Bore: 25-40
NOT splittable

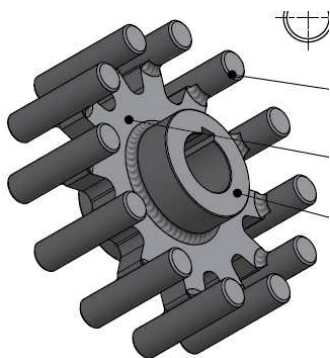


KW 160

Size : 160
Flange: 215
Weight: 5,2 KGS
Bore: 25-45
Splittable

Welded Sprockets

Custom made



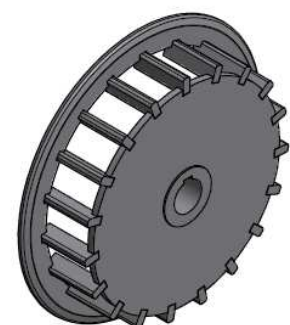
STEEL / STAINLESS STEEL

Custom Made sprocket without flange, for centre belts. All pitches and diameters available.



STEEL / STAINLESS STEEL

Custom Made sprocket with a flange, for side belts. All pitches and diameters available.

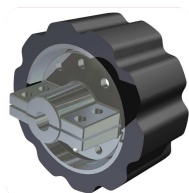


STEEL / STAINLESS STEEL

Custom Made sprocket with a flange, for side belts. All pitches and diameters available.

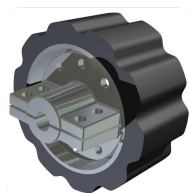
PU Sprockets

Less wear on rod and sprocket



GW 32-16

PITCH: 32
 \varnothing : 183
 Width: 80
 Teeth: 16
 Loose hub



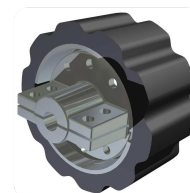
GW 35-17

PITCH: 35
 \varnothing : 210
 Width: 80
 Teeth: 17
 Loose hub



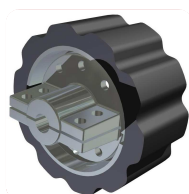
GW 36-14

PITCH: 36
 \varnothing : 180
 Width: 80
 Teeth: 14
 Loose hub



GW 36-16

PITCH: 36
 \varnothing : 204
 Width: 80
 Teeth: 16
 Loose hub



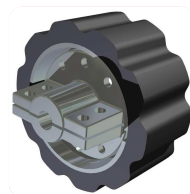
GW 40-15

PITCH: 40
 \varnothing : 210
 Width: 80
 Teeth: 15
 Loose hub



GW 45-13

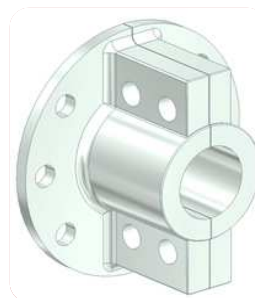
PITCH: 45
 \varnothing : 202
 Width: 80
 Teeth: 13
 Loose hub



GW 50-10

PITCH: 50
 \varnothing : 180
 Width: 80
 Teeth: 10
 Loose hub

HUBS FOR ALL PU-SPROCKETS	BORE
Hub GW Stock bore > 20	± 20
Hub GW bore 25	25
Hub GW bore 30	30
Hub GW bore 35	35
Hub GW bore 40	40
Hub GW bore 45	45
Hub GW bore 50	50



PU Sprockets

Less wear on rod and sprocket



GW 32-22 S

PITCH: 32
∅ : 260
Width: 60
Teeth: 22
 Loose hub



GW 35-20 S

PITCH: 35
∅ : 260
Width: 60
Teeth: 20
 Loose hub



GW 40-18 S

PITCH: 40
∅ : 265
Width: 60
Teeth: 18
 Loose hub



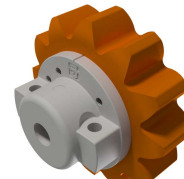
ZP 32-12

PITCH: 32
∅ : 157
Width: 22
Teeth: 12
 Loose hub



ZP 32-14

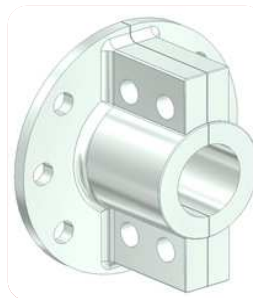
PITCH: 32
∅ : 178
Width: 22
Teeth: 14
 Loose hub



Wide ZP 32-12

PITCH: 32
∅ : 157
Width: 45
Teeth: 12
 Loose hub

HUBS FOR ALL PU-SPROCKETS	BORE
Hub GW Stock bore > 20	± 20
Hub GW bore 25	25
Hub GW bore 30	30
Hub GW bore 35	35
Hub GW bore 40	40
Hub GW bore 45	45
Hub GW bore 50	50



Rubber Flights (RFL)

Durability = lower costs



E-Profile / RFL 20

Height: 26,5mm
Width: 25mm
Rod: 12x6mm
Pitch: All



RFL 30

Height: 38mm
Width: 63mm
Rod: max. 12mm
Pitch: 28-45



RFL 45

Height: 45mm
Width: 84mm
Rod: max. 11mm
Pitch: 28-50



RFL 50

Height: 59mm
Width: 72mm
Rod: max. 12mm
Pitch: 28-50



RFL 50 LF

Height: 56mm
Width: 65mm
Rod: max. 11mm
Pitch: 28-45



RFL 60

Height: 66mm
Width: 80mm
Rod: max. 12mm
Pitch: 40-50



RFL 75

Height: 80mm
Width: 83mm
Rod: max. 12mm
Pitch: 28-50



RFL 75 LF

Height: 81mm
Width: 78mm
Rod: max. 12mm
Pitch: 28-50



RFL 100 LF

Height: 101mm
Width: 78mm
Rod: max. 11mm
Pitch: 28-50



RFL 125 LF

Height: 137mm
Width: 76mm
Rod: max. 12mm
Pitch: 28-50



RFL 140 LF

Height: 146mm
Width: 68mm
Rod: 30x4mm
Pitch: 28-50



RFL 150 LF

Height: 158mm
Width: 78mm
Rod: max. 12mm
Pitch: 28-50



RFL 150 net

Height: 153mm
Width: 83mm
Rod: 30x4mm
Pitch: 50-50



RFL 160 LF

Height: 166mm
Width: 76mm
Rod: max. 12mm
Pitch: 28-50



CPP Flight 36

Height: 47mm
Width: 36mm
Rod: 20x6mm
Pitch: 40-50



Straight Cut



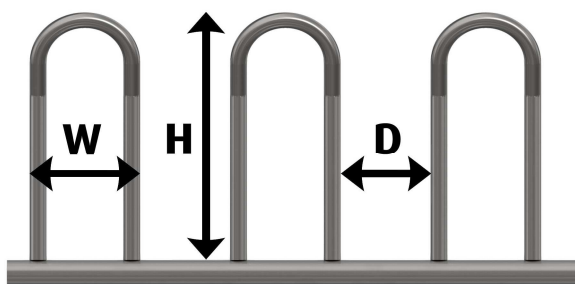
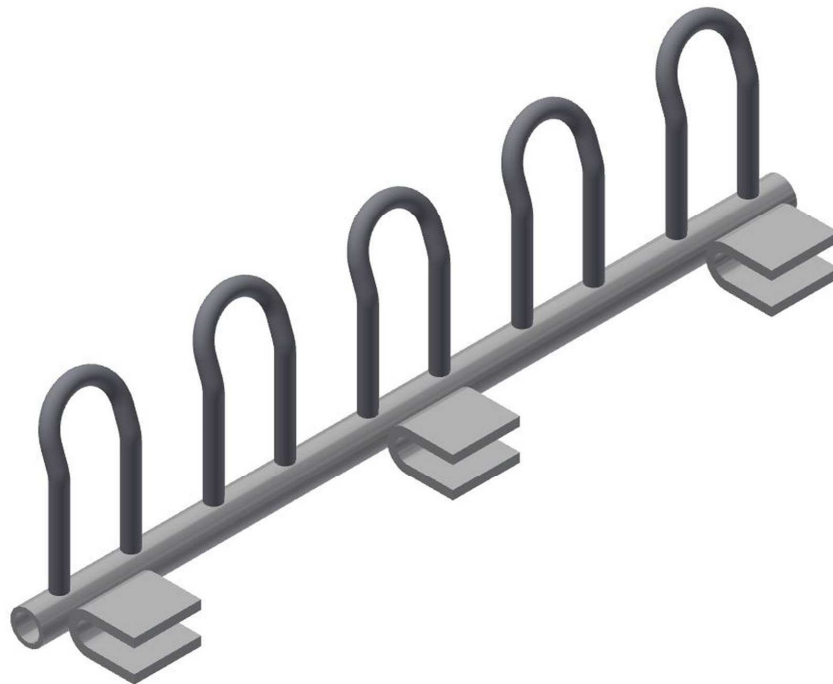
Wings / Sprocket run



Centre Belt cut out

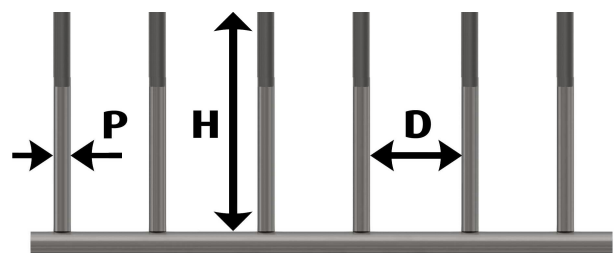
Steel Flights (BR)

Custom Made: Heavy Duty Flights



Important Information:

W = Width of the loop
H = Height of the loop
D = Distance between 2 loops

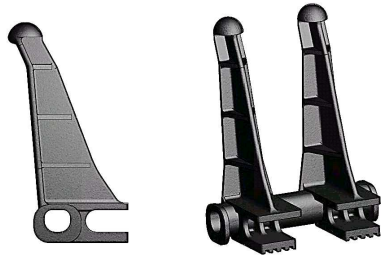


Important Information:

P = Pin diameter
H = Height of the pin
D = Distance between 2 pins

Special Flights

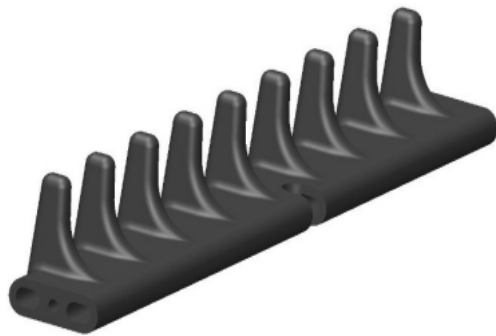
For all different applications



K-EL Flight

Plastic element flight, mostly used in beet industry.

Width of 1 element: 155 mm
 Height: 175 mm
 Finger distance: 85 mm
 Max. rod diameter: 19 mm



PU-flight

Available in different sizes, see figure at the right.

LENGTH	ROD Ø	HEIGHT	FINGER DISTANCE x FINGER WIDTH
550	14	84	75 x 8
550	14	140	70 x 8
640	14	80	70 x 9
645	14	100	77,5 x 9
645	14	103	75 x 9
645	14	110	70 x 9
770	14	110	70 x 12
770	12	110	70 x 12



Adjustable PU-finger

PU element flight: 40mm
 Width of 1 element: 300mm
 Height: 300mm
 Finger distance: 21,5 mm
 Max. rod diameter: 12 mm



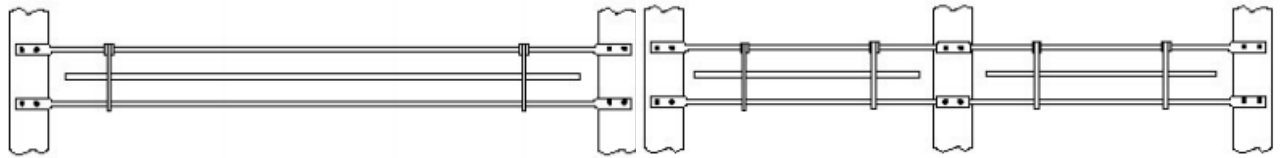
PA 460 Flight

PA element flight:
 Width of 1 element: 460 mm
 Height: 110 mm
 Finger distance: 70 mm
 Max. rod diameter: 14 mm

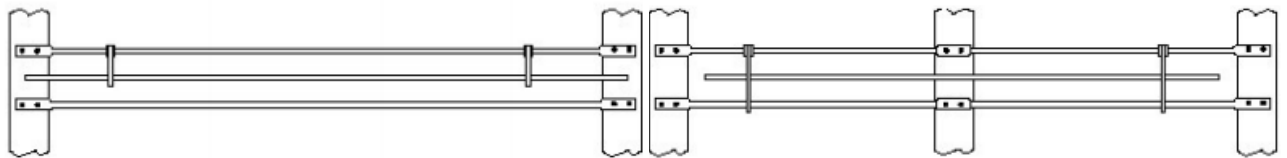
Droplink – Stone trap

Release stones / dirt in your web

Droplink on the rod



Droplink on the belt



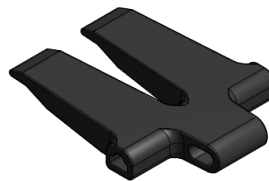
Droplink i.c.w. Active Side Fingers

The ASP-finger is attached to the belt with a 3-hole plate.



PU element Droplink

Available in Pitch 40 and Pitch 50
Dependent on the web width, a certain number of elements is used.



Rod Coverings

Reduce the gap / protect your crop

TYPE	INSIDE	OUTSIDE
STAR PVC	7,7	14
STAR PVC	8,5	14
STAR PVC	9,5	16
STAR PVC	9,5	19
STAR PVC	10,5	16
STAR PVC	10,5	18
STAR PVC	10,5	20
STAR PVC	11,5	16
STAR PVC	11,5	19
STAR PVC	11,5	25
STAR PVC	13	20



TYPE	INSIDE	OUTSIDE
SPLIT PVC	6	9
SPLIT PVC	8	11
SPLIT PVC	9	12
SPLIT PVC	10	14
SPLIT PVC	10	16
SPLIT PVC	10	20
SPLIT PVC	11	16
SPLIT PVC	12	16
SPLIT PVC	13	17
SPLIT PVC	20	25
SPLIT PVC	10 FDA	16 FDA



TYPE	INSIDE	OUTSIDE
RUBBER	6	9
RUBBER	9	13
RUBBER	10	16
RUBBER	10,5	14,5
RUBBER	10,5	16
RUBBER	11,5	15,5
RUBBER	12	16
RUBBER	13	23
RUBBER	15	30
RUBBER	19	19



TYPE	INSIDE	OUTSIDE
PILLOW CUSHION	15	27
PILLOW CUSHION	11,5	24



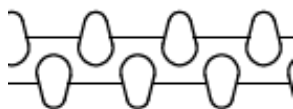
TYPE	INSIDE	OUTSIDE
SOFT PVC	6,5	9



Pintle Rods

The right pintle for every job

TYPE	WEB WIDTH	BELTS (CTC)	NR. OF BELTS	ART. NR.
V-Pintle on $\emptyset 9 - ZV$	250	60mm (30)	2	117001355
V-Pintle on $\emptyset 9 - ZV$	605	60mm (32)	2 or more	117000034
V-Pintle on $\emptyset 9 - ZV$	619	60mm (32)	2 or more	117000619
V-Pintle on $\emptyset 9 - ZV$	630	60mm (32)	2 or more	117000035
V-Pintle on $\emptyset 9 - ZV$	655	60mm (32)	2 or more	117000619
V-Pintle on $\emptyset 9 - ZV$	705	60mm (32)	2 or more	117000606
V-Pintle on $\emptyset 9 - ZV$	725	60mm (32)	2 or more	117001148
V-Pintle on $\emptyset 9 - ZV$	755	60mm (32)	2 or more	117000036
V-Pintle on $\emptyset 9 - ZV$	780	60mm (32)	2 or more	117000607
V-Pintle on $\emptyset 9 - ZV$	805	60mm (32)	2 or more	117000037
V-Pintle on $\emptyset 9 - ZV$	855	60mm (32)	2 or more	117000038
V-Pintle on $\emptyset 9 - ZV$	889	60mm (32)	2 or more	117000608
V-Pintle on $\emptyset 9 - ZV$	905	60mm (32)	2 or more	117000626
V-Pintle on $\emptyset 9 - ZV$	1005	60mm (32)	2 or more	117000039
V-Pintle on $\emptyset 9 - ZV$	1105	60mm (32)	2 or more	117000041
V-Pintle on $\emptyset 9 - MV$	1105	60mm (32)	2 or more	117000040
V-Pintle on $\emptyset 9 - ZV$	1205	60mm (32)	3	117000609
V-Pintle on $\emptyset 9 - ZV$	1305	60mm (32)	2 or more	117000610
V-Pintle on $\emptyset 9 - ZV$	1450	60mm (32)	2 or more	117001147
V-Pintle on $\emptyset 9 - MV$	1450	60mm (32)	2 or more	117001149
V-Pintle on $\emptyset 9 - ZV$	1505	60mm (32)	2 or more	117000611
V-Pintle on $\emptyset 9 - ZV$	1625	60mm (32)	2 or more	117001306
V-Pintle on $\emptyset 9 - MV$	1625	60mm (32)	2 or more	117001307
V-Pintle on $\emptyset 9 - ZV$	1655	60mm (32)	2 or more	117001125



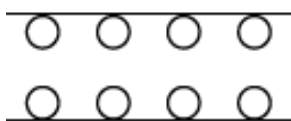
MV

33

Pintle Rods

The right pintle for every job

TYPE	WEB WIDTH	BELTS (CTC)	NR. Of BELTS	ART. NR.
H-Pintle on $\varnothing 10$	616	60mm (32)	2	117000002
H-Pintle on $\varnothing 10$	636	60mm (32)	2	117000003
H-Pintle on $\varnothing 10$	656	60mm (32)	2	117000004
H-Pintle on $\varnothing 10$	696	60mm (32)	2	117000005
H-Pintle on $\varnothing 10$	776	60mm (32)	2	117000007
H-Pintle on $\varnothing 10$	796	60mm (32)	2	117000008
H-Pintle on $\varnothing 10$	896	60mm (32)	2	117000009
H-Pintle on $\varnothing 10$	996	60mm (32)	2	117000010
H-Pintle on $\varnothing 10$	1096	60mm (32)	2	117000011



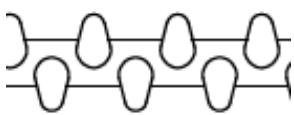
TYPE	WEB WIDTH	BELTS (CTC)	NR. Of BELTS	ART. NR,
1 Pintle on $\varnothing 10$	300	50mm (20)	2	117000820
1 Pintle on $\varnothing 10$	350	50mm (24)	2	117000821
1 Pintle on $\varnothing 10$	750	50mm (24)	2	117000822
1 Pintle on $\varnothing 10$	900	50mm (20)	2	117000823
1 Pintle on $\varnothing 10$	1000	50mm (20)	2	117000824
1 Pintle on $\varnothing 8$	1103	50mm (24)	2	117001329



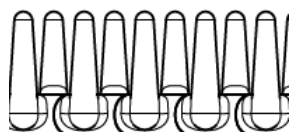
Pintle Rods

The right pintle for every job

TYPE	WEB WIDTH	BELTS(CTC)	NR. OF BELTS	ART. NR.
V-Pintle on $\varnothing 9 - ZV$	725	60mm (30)	2 or more	117000847
V-Pintle on $\varnothing 9 - ZV$	800	60mm (30)	2 or more	117000679
V-Pintle on $\varnothing 9 - ZV$	900	60mm (30)	2 or more	117000680
V-Pintle on $\varnothing 9 - ZV$	1160	60mm (30)	2 or more	117000686
V-Pintle on $\varnothing 9 - ZV$	1400	60mm (2x30 / 1x20)	3	117000747
V-Pintle on $\varnothing 9 - ZV$	1450	60mm (30)	2 or more	117000681
V-Pintle on $\varnothing 9 - ZV$	1700	60mm (2x30 / 1x20)	3	117000846

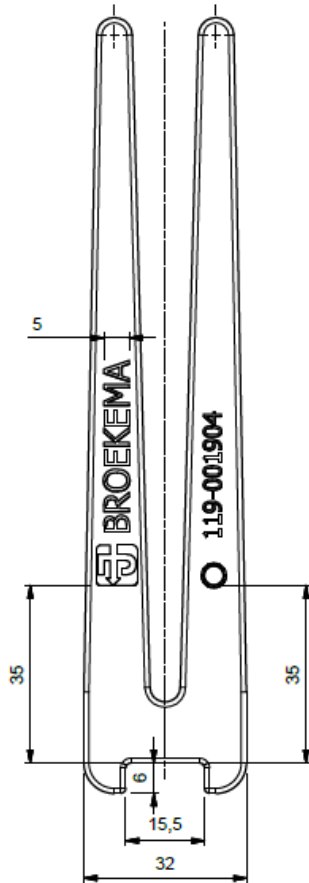


TYPE	WEB WIDTH	BELTS(CTC)	NR. OF BELTS	ART. NR.
H-Pintle on $\varnothing 8$	650	60mm (32)	2 or more	117001156
H-Pintle on $\varnothing 8$	700	60mm (32)	2 or more	117001347
H-Pintle on $\varnothing 8$	730	60mm (32)	2 or more	117001157
H-Pintle on $\varnothing 8$	890	60mm (32)	2 or more	117001158
H-Pintle on $\varnothing 8$	900	60mm (32)	2 or more	117001348
H-Pintle on $\varnothing 8$	990	60mm (32)	2 or more	117001205
H-Pintle on $\varnothing 8$	1160	60mm (32)	2 or more	117001349
H-Pintle on $\varnothing 8$	1300	60mm (32)	2 or more	117001159
H-Pintle on $\varnothing 8$	1350	60mm (32)	2 or more	117001206
H-Pintle on $\varnothing 8$	1450	60mm (32)	2 or more	117001350
H-Pintle on $\varnothing 8$	1650	60mm (32)	2 or more	117001163



Fingers

Side Protection / Haulm fingers



POP-ON ACTIVE SIDE PROTECTION

- Connected to a 3rd hole in a rod, or;
on a 3 hole plate.
- Connected with Steel / Steel pop rivets
- Can be used in combination with Rod conveyers and
Lightweight (canvas) conveyers.
- No Sprocket Run available
- Material: PU

- Minimum Pitch: 40 mm
- Height: 150 mm
- Width: 36 mm



RUBBER
Haulm Finger 110 x 24
(Inside 8mm)
72° Shore A



RUBBER
Haulm Finger 78 x 25
(Inside 8mm)
72° Shore A

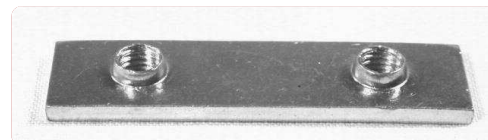


RUBBER
Haulm Finger 70 x 23/17,5
(Inside 8mm)
72° Shore A

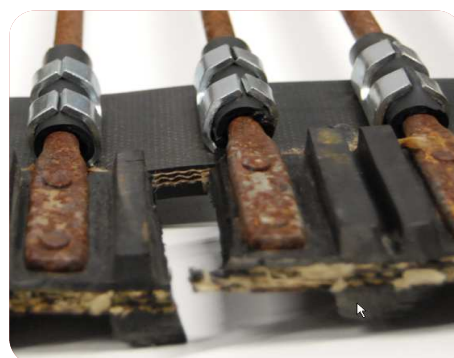
Quickfix Solutions

Problem solving products

PILOT BOLTS	THREAD	LENGTH	ART.NUMBER
M5 x 19mm TORX	M5	19	122000524
M5 x 21,5mm TORX	M5	21,5	122000525
M5 x 24mm TORX	M5	24	122000495
M6 x 17mm TORX	M6	17	TBA
M6 x 19mm TORX	M6	19	122000526
M6 x 21,5mm TORX	M6	21,5	122000527
M6 x 24mm TORX	M6	24	122000496
M8 x 25mm TORX	M8	25	122000551



REPAIR SECTIONS	NR. OF PITCHES	+ STAR PVC
Pitch 28	16	10,5 x 16
Pitch 32	8	10,5 x 16
Pitch 35	8	10,5 x 16
Pitch 36	8	10,5 x 16
Pitch 40	8	10,5 x 16
Pitch 42	8	10,5 x 16
Pitch 45	8	10,5 x 16
Pitch 50	8	10,5 x 16



All lengths are possible

O.E.M - Drives

Rubber / PU Drives



076.04646

Size: 260 x 60
Pitch :28
Teeth: 26



076.04046

Size: 260 x 60
Pitch: 32
Teeth: 22



076.04047

Size: 260 x 60
Pitch: 35
Teeth: 20



076.04048

Size: 260 x 60
Pitch: 40
Teeth: 18



076.03521

Size: 189 x 60
Pitch :32
Teeth: 16



076.03447

Size: 185 x 60
Pitch :50
Teeth: 10



076.03514

Size: 215 x 60
Pitch :35
Teeth: 17



076.03504

Size: 217 x 60
Pitch :40
Teeth: 15



076.03505

Size: 212 x 60
Pitch :35
Teeth: 13



076.01046

Size: 132 x 58
Bore: 30



076.00655

Size: 132 x 65
Bore: 35



076.00823

Size: 168 x 63
Bore: 35



076.00704

Size: 194 x 60
Bore: 35



076.02509

Size: 194 x 80
Bore: 40



*This item is not a standard Stock item.
Ask for the current stock position.
In case of no stock > MOQ= 30 pcs.*

O.E.M - Drives

Rubber / PU Drives



076.02509

Size: 194 x 80
Bore: 40



076.02400

Size: 194 x 80
Bore: 40



076.00838

Size: 194 x 80
Bore: 50



076.00820

Size: 132x 65
Flange: 170
Bore: 35



076.00822

Size: 168x 63
Flange: 210
Bore: 35



076.01618

Size: 194x 60
Flange: 235
Bore: 35



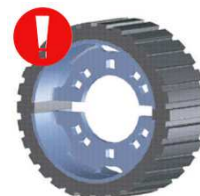
076.00912

Size: 100x 67
Flange: 136
Bore: 30



076.03535

Size: 200 x 80



076.04013

Size: 194 x 60



076.04059

Size: 194 x 80



076.04011

Size: 194 x 60
Flange: 235



076.01022

Size: 240 x 80



*This item is not a standard Stock item.
Ask for the current stock position.
In case of no stock > MOQ= 30 pcs.*

O.E.M - Rollers

Rubber / PU Rollers



076.00759

Size: 100 x 77
Flange: 136



076.00671

Size: 128 x 89



088.00168

Size: 90 x 30
M12



088.00243

Size: 62 x 21
M12



088.00315

Size: 95 x 62
Flange: 132
M24



200.00807

Size: 100 x 65
Flange: 145



200.02869

Size: 100 x 65
Flange: 145



200.05168

Size: 195 x 40
M16 x 37



200.00807

Size: 195 x 62
M16 x 40



200.06349

Size: 70 / 40 x 120



200.07970

Size: 130 x 78



200.08260

Size: 128 x 60
Flange: 160



200.09304

Size: 130 x 78



200.09305

Size: SPECIAL
DESIGN



200.10202

Size: 80 x 45
Flange: 108
M16 x 28



*This item is not a standard Stock item.
Ask for the current stock position.
In case of no stock > MOQ= 30 pcs.*

O.E.M - Rollers

Rubber / PU Rollers



200.11197

Size: 100 x 60
Flange: 145



200.11379
200.46387

Size: 100 x 75



200.28967

Size: 75 x 43
M16



200.16029

Size: 100 x 77
Flange: 136
M24 x 25



200.17208

Size: 60 x 22
M12



200.24936

Size: 77x 55
M16



200.27578

Size: 75 x 60
M16



200.27581
200.53261

Size: 95 x 60
M16



200.27584

Size: 95 x 54
Flange: 130
M16



200.27673

Size: 75 x 52
Flange: 130
M16



200.27931

Size: 75 x 52
Flange: 105
M16



200.28967
200.54884

Size: 75 x 43
M16



200.29585

Size: 100 x 65
Flange: 145



200.29586

Size: 80 x 45
Flange: 105



200.30645

Size: 60 x 41
M16



*This item is not a standard Stock item.
Ask for the current stock position.
In case of no stock > MOQ= 30 pcs.*

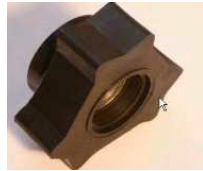
O.E.M - Rollers

Rubber / PU Rollers



200.32845

Size: 95 x 65
Flange: 130
M16



200.34296

SHAKER
Size: SPECIAL DESIGN



200.38132

Size: 95 x 53
Flange: 130
M16



200.39136

Size: 95 x 60
M16



200.39267

Size: 150 x 52
Flange: 190
M16



200.40200

Size: 150 x 45/60
M16



200.40603

Size: 90 x 44
M12



200.41100

Size: 75 x 52
Flange: 105
M16



200.41630

Size: 75 x 42
M16



200.42986

Size: 195 x 60
M16



200.42985

Size: 195 x 60
Flange: 240
M16



200.46340

Size: 100 x 67
Flange: 130
M24



200.49303

Size: 95 x 60
M16



200.49508

Size: 128 x 74
Flange: 160
M16



200.50894

Size: 75 x 105
M16



*This item is not a standard Stock item.
Ask for the current stock position.
In case of no stock > MOQ= 30 pcs.*

O.E.M - Rollers

Rubber / PU Rollers



602.00052

Size: 95 x 60
M16



602.00053

Size: 75 x 62
M16



602.00204

Size: 95 x 55
Flange: 130
M16



602.00070

Size: 75 x 50
M16



602.00281

Size: 75 x 55
Flange: 105
M16



623.00011

Size: 100 x 28
M16



623.00012

Size: 123 x 28
M16



602.00288

Size: 75 x 55
Flange 130
M16



*This item is not a standard Stock item.
Ask for the current stock position.
In case of no stock > MOQ= 30 pcs.*